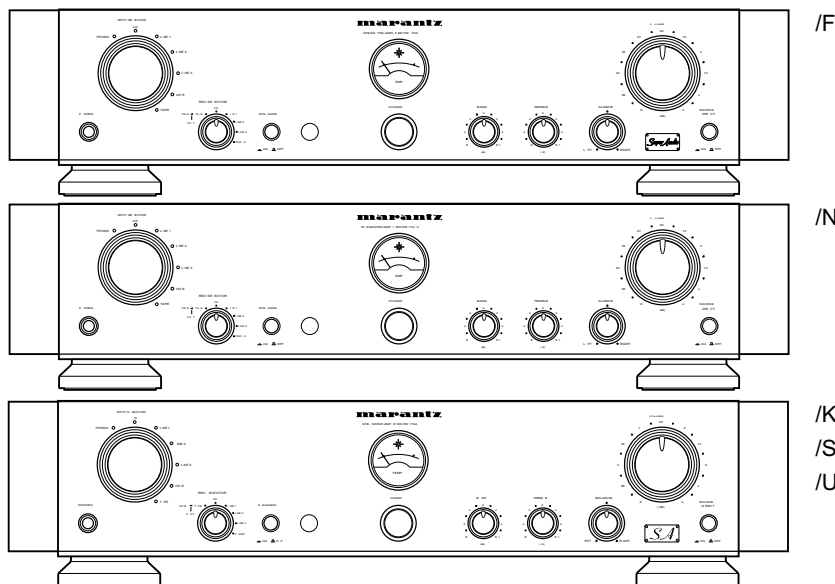


# Service Manual

PM17A /F1N, /K1G, /N1G, /S1G  
/N1B, /U1B  
Integrated amplifier



PM-17SA / mkII

## TABLE OF CONTENTS

SECTION	PAGE
1. TECHNICAL SPECIFICATIONS .....	1
2. BLOCK DIAGRAM .....	2
3. TEST EQUIPMENT REQUIRED FOR SERVICING .....	2
4. SCHEMATIC DIAGRAM .....	3
5. PARTS LOCATION (Pattern Side) .....	7
6. EXPLODED VIEW AND PARTS LIST .....	12
7. DC OFFSET VOLTAGE ALIGNMENT .....	15
8. IDLING CURRENT ALIGNMENT .....	15
9. ELECTRICAL PARTS LIST .....	16

Please use this service manual with referring to the user guide ( D.FU. ) without fail.  
修理の際は、必ず取扱説明書を準備し操作方法を確認の上作業を行ってください。

# marantz®

## PM-17SA / PM-17mkII

313J855010 MIT  
3120 785 22180  
First Issue 1999.10

## MARANTZ DESIGN AND SERVICE

Using superior design and selected high grade components, **MARANTZ** company has created the ultimate in stereo sound. Only original **MARANTZ** parts can insure that your **MARANTZ** product will continue to perform to the specifications for which it is famous.

Parts for your **MARANTZ** equipment are generally available to our National Marantz Subsidiary or Agent.

### ORDERING PARTS :

Parts can be ordered either by mail or by Fax.. In both cases, the correct part number has to be specified.

The following information must be supplied to eliminate delays in processing your order :

1. Complete address
2. Complete part numbers and quantities required
3. Description of parts
4. Model number for which part is required
5. Way of shipment
6. Signature : any order form or Fax. must be signed, otherwise such part order will be considered as null and void.

#### USA

**MARANTZ AMERICA, INC.**  
440 MEDINAH ROAD  
ROSELLE, ILLINOIS 60172  
USA  
PHONE : 630 - 307 - 3100  
FAX : 630 - 307 - 2687

#### EUROPE / TRADING

**MARANTZ EUROPE B.V.**  
P.O.BOX 80002, BUILDING SFF2  
5600 JB EINDHOVEN  
THE NETHERLANDS  
PHONE : +31 - 40 - 2732241  
FAX : +31 - 40 - 2735578

#### BRAZIL

**MARANTZ BRAZIL**  
CAIXA POSTAL 21462  
CEP 04698-970  
SAO PAULO, SP, BRAZIL  
PHONE : 0800 - 123123(Discagem Direta Gratuita)  
FAX : +55 11 534. 8988

#### PROFESSIONAL AMERICAS

**SUPERSCOPE TECHNOLOGIES, INC.**  
MARANTZ PROFESSIONAL PRODUCTS  
2640 WHITE OAK CIRCLE, SUITE A  
AURORA, ILLINOIS 60504 USA  
PHONE : 630 - 820 - 4800  
FAX : 630 - 820 - 8103

#### CANADA

**LENBROOK INDUSTRIES LIMITED**  
633 GRANITE COURT,  
PICKERING, ONTARIO L1W 3K1  
CANADA  
PHONE : 905 - 831 - 6333  
FAX : 905 - 831 - 6936

#### AUSTRALIA

**JAMO AUSTRALIA PTY LTD**  
1 EXPO COURT, P.O. BOX 350  
MT. WAVERLEY VIC 3149  
AUSTRALIA  
PHONE : +61 - 3 - 9543 - 1522  
FAX : +61 - 3 - 9543 - 3677

#### THAILAND

**MRZ STANDARD CO.,LTD**  
746 - 754 MAHACHAI ROAD.,  
WANGBURAPAPIROM, PHRANAKORN,  
BANGKOK, 10200 THAILAND  
PHONE : +66 - 2 - 222 9181  
FAX : +66 - 2 - 224 6795

#### SINGAPORE

**WO KEE HONG (S) PTE LTD**  
WO KEE HONG CENTRE  
NO.23, LORONG 8, TOA PAYOH  
SINGAPORE 319257  
PHONE : +65 2544555  
FAX : +65 2502213

#### TAIWAN

**PAI-YUING CO., LTD.**  
6 TH FL NO, 148 SUNG KIANG ROAD,  
TAIPEI, 10429, TAIWAN R.O.C.  
PHONE : +886 - 2 - 25221304  
FAX : +886 - 2 - 25630415

#### MALAYSIA

**WO KEE HONG ELECTRONICS SDN. BHD.**  
SUITE 8.1, LEVEL 8, MENARA GENESIS,  
NO. 33, JALAN SULTAN ISMAIL,  
50250 KUALA LUMPUR, MALAYSIA  
PHONE : +60 3 - 2457677  
FAX : +60 3 - 2458180

#### JAPAN *Technical*

**MARANTZ JAPAN, INC.**  
35- 1, 7- CHOME, SAGAMIONO  
SAGAMIHARA - SHI, KANAGAWA  
JAPAN 228-8505  
PHONE : +81 42 748 1013  
FAX : +81 42 741 9190

#### 日本マランツ株式会社

本社 〒228-8505  
神奈川県相模原市相模大野7-35-1  
営業本部 〒150-0022  
東京都渋谷区恵比寿南1-11-9

#### KOREA

**MK ENTERPRISES LTD.**  
ROOM 604/605, ELECTRO-OFFICETEL, 16-58,  
3GA, HANGANG-RO, YONGSAN-KU, SEOUL  
KOREA  
PHONE : +822 - 3232 - 155  
FAX : +822 - 3232 - 154

### SHOCK, FIRE HAZARD SERVICE TEST :

**CAUTION :** After servicing this appliance and prior to returning to customer, measure the resistance between either primary AC cord connector pins ( with unit NOT connected to AC mains and its Power switch ON ), and the face or Front Panel of product and controls and chassis bottom.

Any resistance measurement less than 1 Megohms should cause unit to be repaired or corrected before AC power is applied, and verified before it is return to the user/customer.

Ref. UL Standard No. 1492.

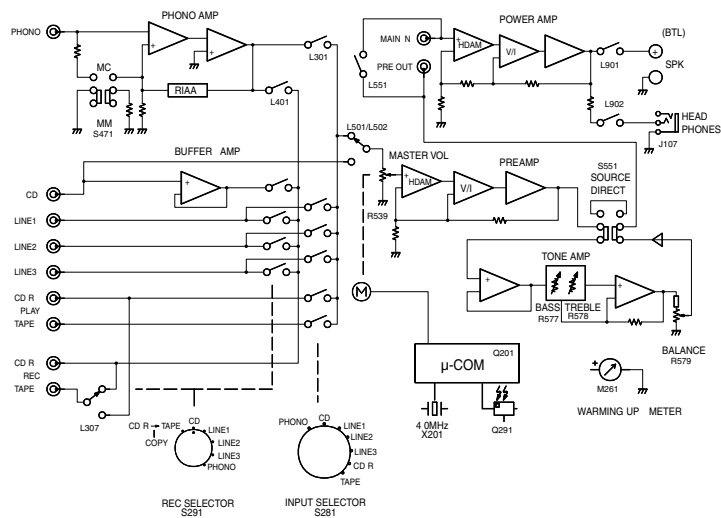
In case of difficulties, do not hesitate to contact the Technical Department at above mentioned address.

## 1. TECHNICAL SPECIFICATIONS

Rated power output (20 Hz to 20 kHz, 2CH simultaneous drive) .....	60 W x 2 (8 Ω load)
	80 W x 2 (6 Ω load)
	100 W x 2 (4 Ω load)
Total harmonic distortion (20 Hz to 20 kHz, 2CH drive, 8 Ω load) .....	0.01 %
Cross-modulation distortion (SMPTE) .....	0.01 %
Output bandwidth (8 Ω load, 0.04 %) .....	10 Hz to 50 kHz
Frequency response (CD, SOURCE DIRECT) .....	5 Hz to 70 kHz, +0/-1 dB
Damping factor (8 Ω load, 20 Hz to 20 kHz) .....	100
Input sensitivity/input impedance	
PHONE (MC) .....	230 μV/100 Ω
PHONE (MM) .....	2.5 mV/47 kΩ
HIGH LEVEL .....	220 mV/22 kΩ
MAIN IN .....	1.6 V/22 kΩ
Output voltage/output impedance	
PRE OUT .....	1.6 V/250 Ω
Maximum allowable PHONE input (1 kHz)	
MC .....	15 mV
MM .....	150 mV
RIAA deviation (20 Hz to 20 kHz) .....	±0.2 dB
S/N (IHF A network, input shorted)	
PHONE (MC) .....	76 dB
PHONE (MM) .....	90 dB
HIGH LEVEL .....	112 dB
Tone control	
BASS (100 Hz) .....	±8 dB
TREBLE (10 kHz) .....	±8 dB
Supply voltage	
F version .....	100 V AC, 50/60 Hz
/K1 version .....	110 V/220 V AC, 50/60 Hz
/N1, /S1 version .....	230 V AC, 50 Hz
/U1 version .....	120 V AC, 60 Hz
Power consumption .....	180 W
Dimensions ( Maximum )	
Width .....	458 mm
Height .....	110 mm
Depth .....	429 mm
Weight .....	16 kg
Accessories	
Remote control unit (RC-17mklIPM) .....	x 1
Dimensions	
Width .....	44 mm
Height .....	239 mm
Depth .....	17.5 mm
Weight (without batteries) .....	189 g
SUM-4 (R6/ *AA* size) dry cell battery .....	x 2

Design and specifications are subject to change without notice.

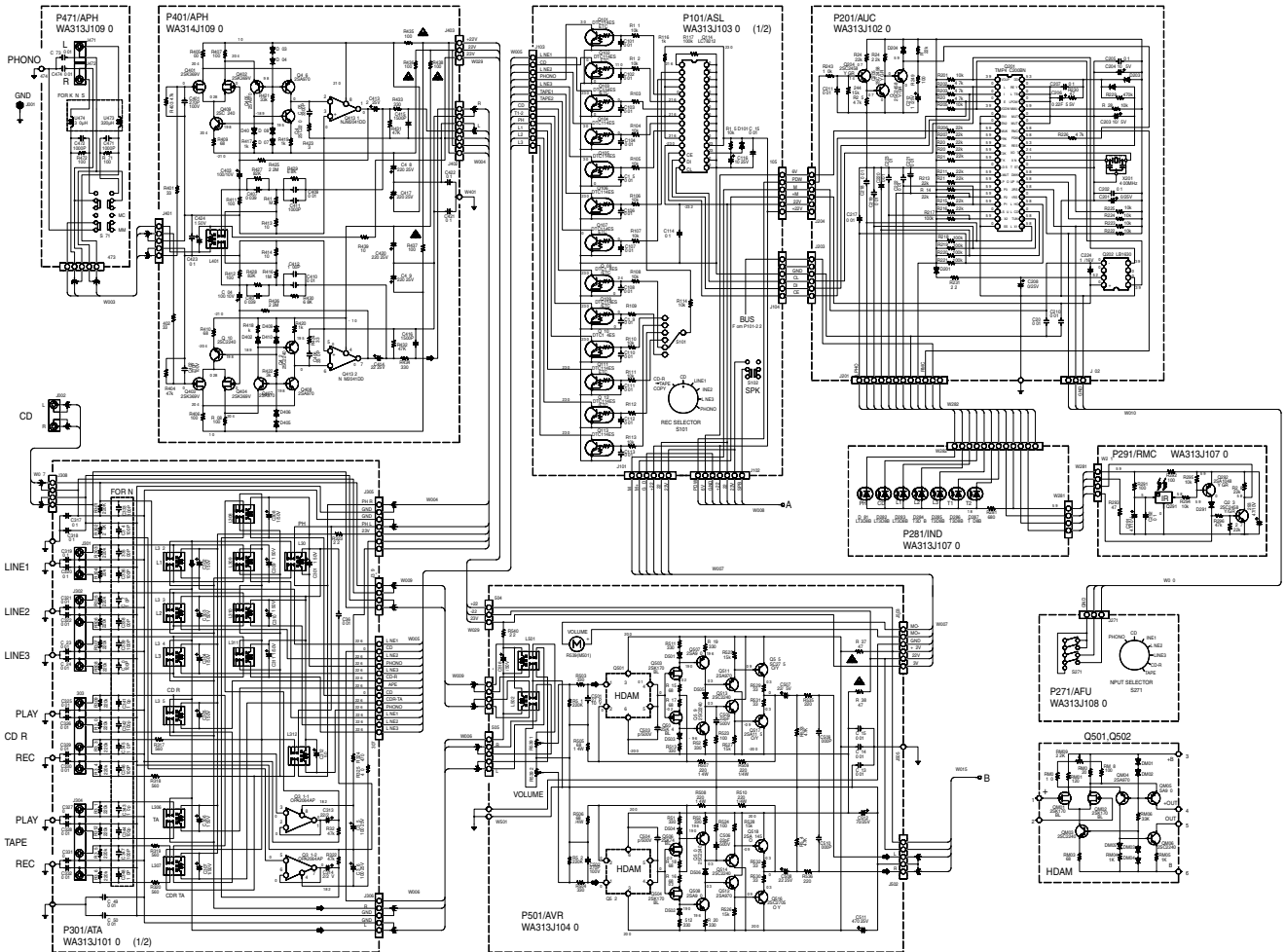
## 2. BLOCK DIAGRAM

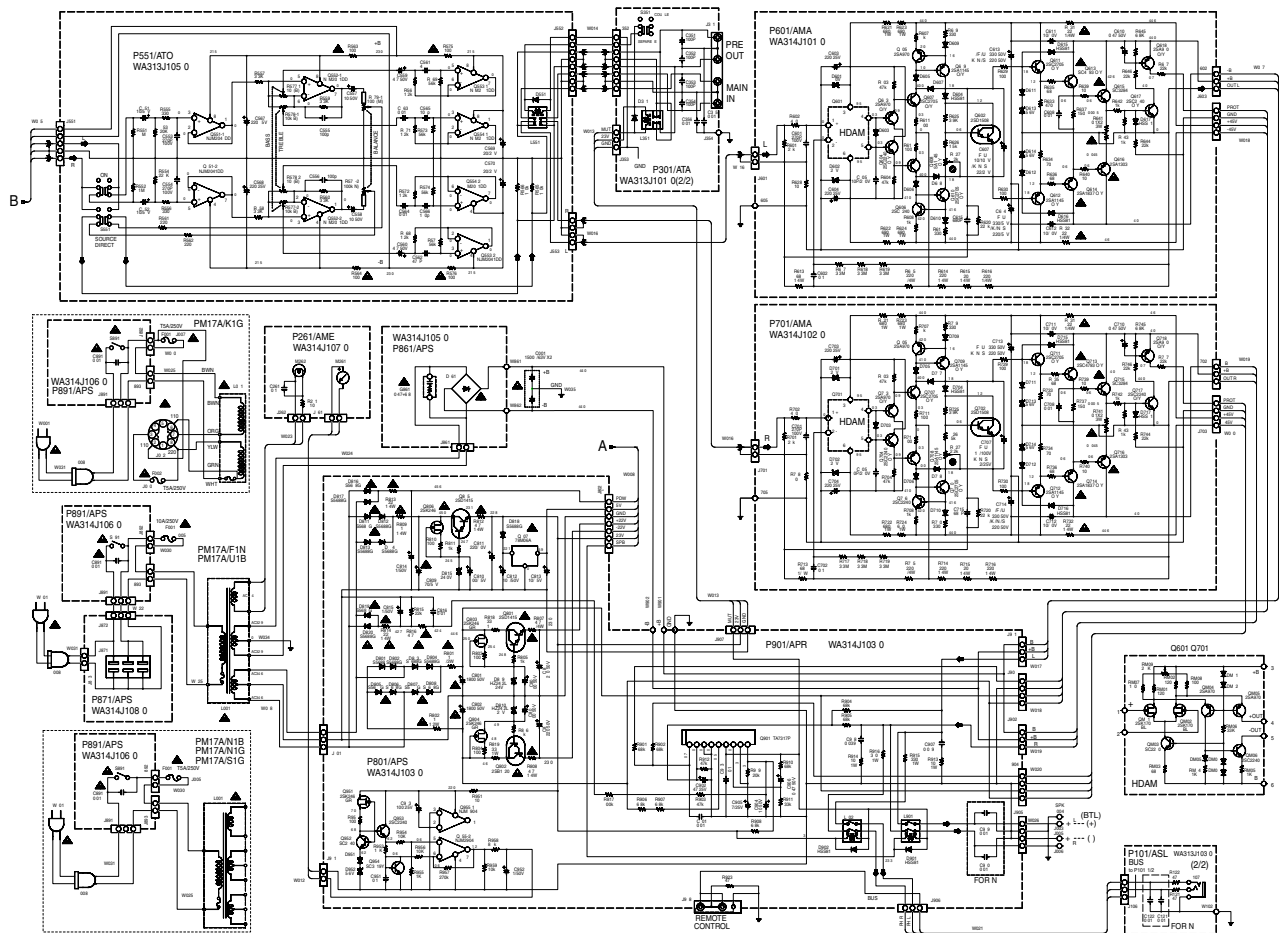


## 3. TEST EQUIPMENT REQUIRED FOR SERVICING

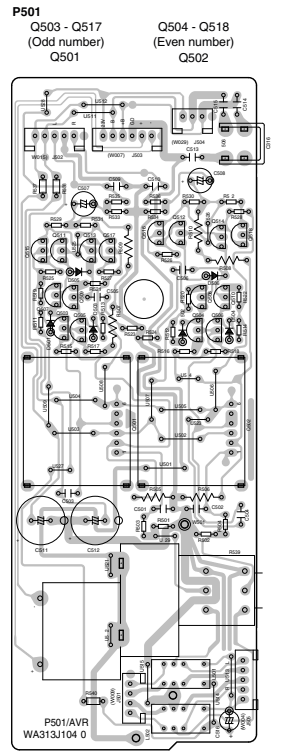
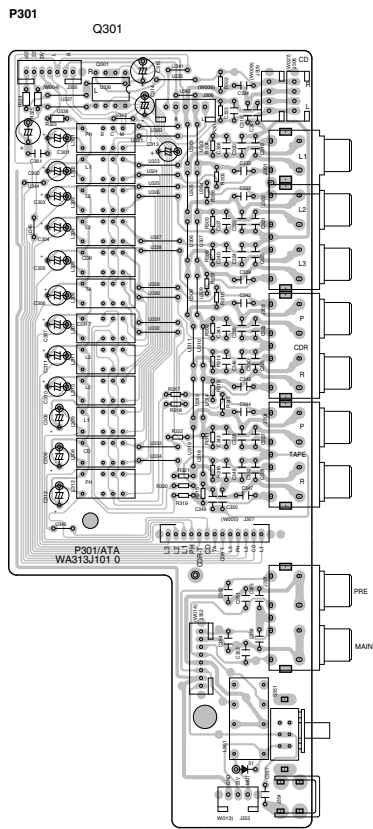
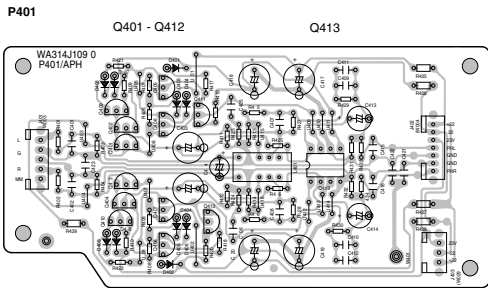
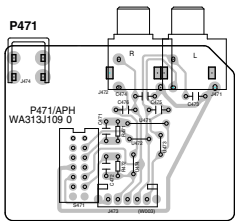
Item	Use
項目	使用方法
Distortion Analyzer 歪率計	Distortion measurements 歪の測定
Audio Oscillator 音声発振器	Sinewave and squarewave signal source 正弦波及び矩形波の発生源
AC VTVM	Voltage measurements (AC) 交流電圧の測定
Oscilloscope オシロスコープ	Waveform analysis and trouble shooting and ASO alignment 波計分析、トラブルシューティング及びASOの調整
DC VTVM	Voltage measurements (DC) 直流電圧の測定
AC Wattmeter 交流ワットメーター	Monitors primary power to amplifier アンプの一次側消費電力のモニター
Line Voltmeter 電圧電圧計	Monitors potential of primary power to amplifier アンプの一次側消費電圧のモニター
Variable Autotransformer スライダック	Adjust level of primary power to amplifier アンプの一次側電圧の調節
Circuit Tester テスター	Trouble shooting トラブルシューティング
Shorting Plug ショート用プラグ	Shorts amplifier input to eliminate noise pickup 雑音を拾わないようにアンプ入力を短絡する

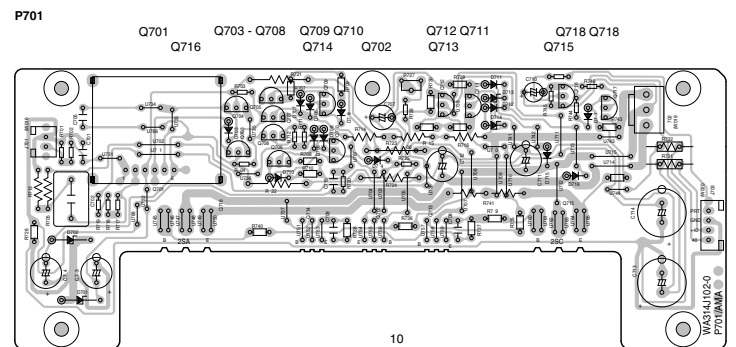
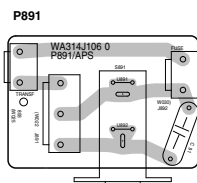
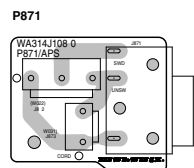
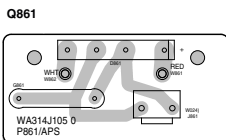
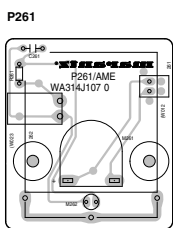
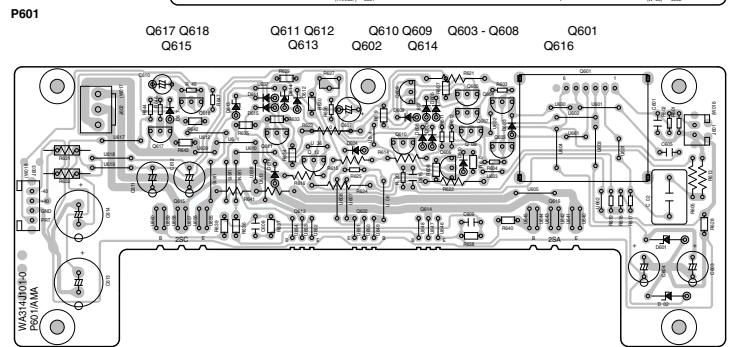
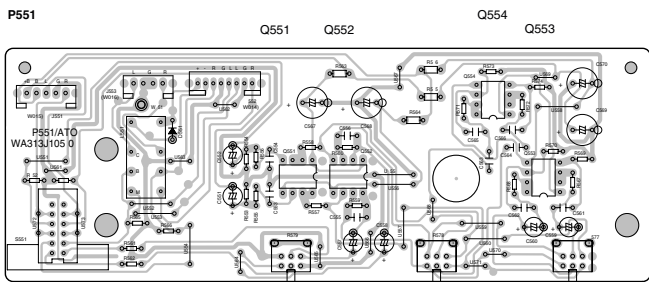
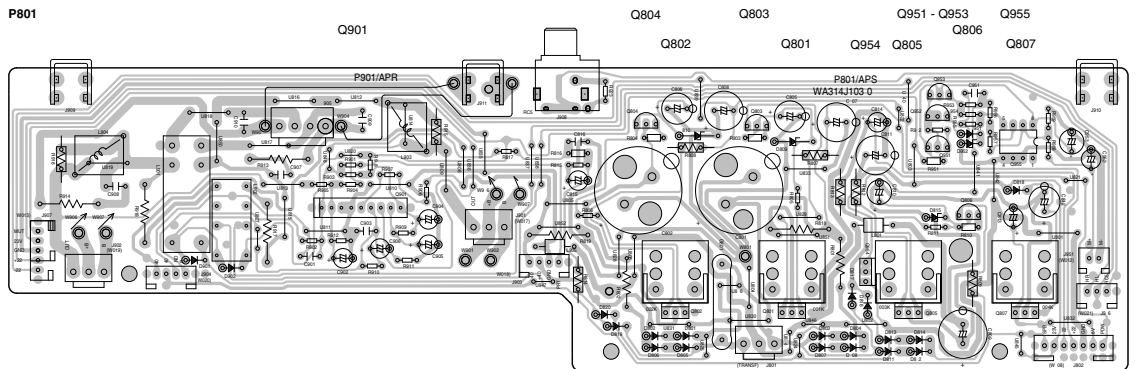
4. SCHEMATIC DIAGRAM



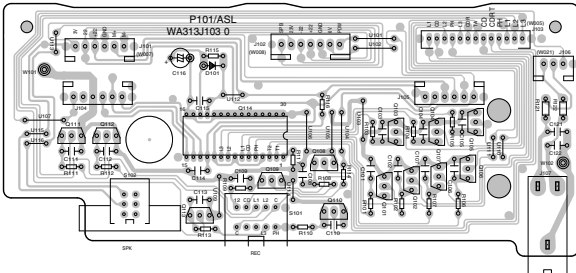


5. PARTS LOCATION (Pattern Side)

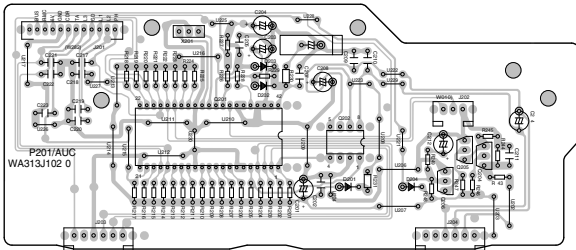




P101 Q111 Q112 Q113 Q114 Q109 Q108 Q110 Q103 Q101 Q104 Q106 Q105 Q108 Q108



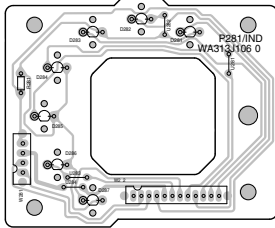
P201 Q201 Q202 Q206 Q205 Q204



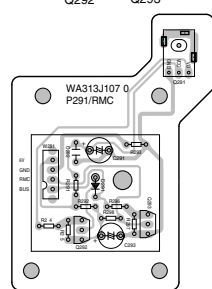
P271



P281



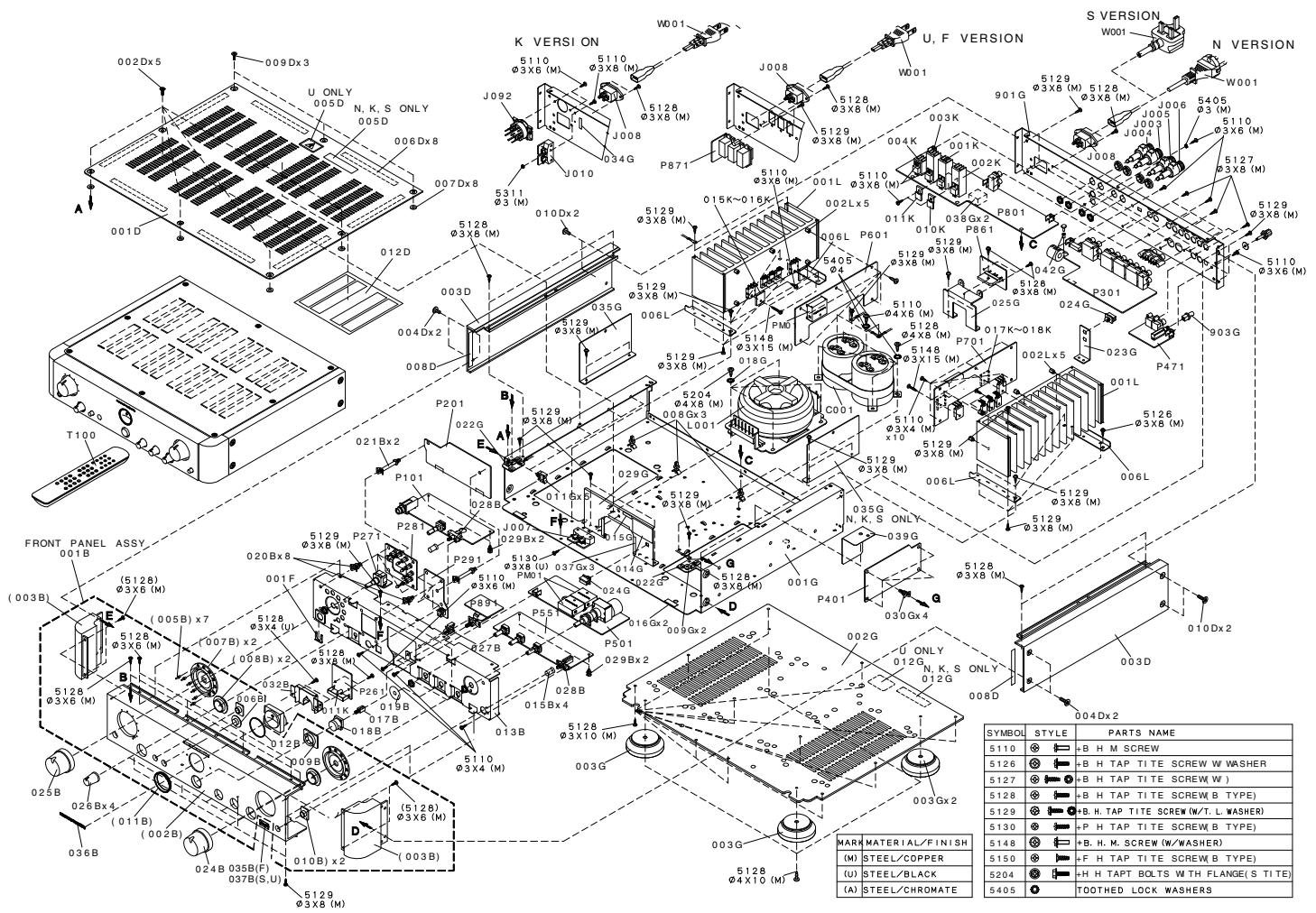
P291



6. EXPLODED VIEW AND PARTS LIST

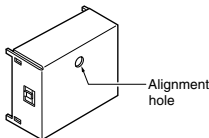
POS. NO.	VERS. COLOR	PART NO. (FOR PCS)	DESCRIPTION	PART NO. (MUJ)	POS. NO.	VERS. COLOR	PART NO. (FOR PCS)	DESCRIPTION	PART NO. (MUJ)
001B	/FIN		FRONT PANEL ASSY PM-17SA	313J248510	J002		4822 290 81671	TERMINAL 2P RCA PIN GL	Y02021240
			GOLD HAIR		J003		4822 265 11424	TERMINAL WBT-0745	Y010103360
001B	/KIG /STIG /NIG	9965 000 01834	FRONT PANEL ASSY PM-17SA	313J248550	J004		4822 265 11425	POLE TERMINA-E34L RED	Y010103370
			FRONT PANEL ASSY	313J248530	J005		4822 265 11424	TERMINAL WBT-0745	Y010103360
001B	/N1B	9965 000 01814	PM-17MK2 GOLD BLAST	313J248520	J006		4822 265 11425	TERMINAL WBT-0745	Y010103370
			FRONT PANEL ASSY						
001B	/U1B		FRONT PANEL ASSY PM-17SA	313J248540	▲J007	/F /K /J /U		POLE TERMINAL WHT	Y010103370
			BLACK BLAST					POLE TERMINAL WHT	Y010103370
003B	GOLD	4822 426 10497	ESCUTCHEON GOLD	269J063110	▲J008		4822 267 31818	JACK FUSE HOLDER	Y08000600
003B	BLACK	4822 426 10496	ESCUTCHEON BLACK	269J063010	▲J007	/N /S		JACK FUSE HOLDER	Y080006010
015B	GOLD	4822 410 63898	FOR S.DISP/PEAKER GOLD	144J270010	▲J008		4822 265 11399	JACK AC INLET SOT-16C	YJ04002360
015B	BLACK	4822 410 10227	FOR S.DISP/PEAKER BLACK	144J270110	▲J010	/K	4822 267 31818	JACK FUSE HOLDER	Y080006010
017B		4822 404 21012	JOINT LINK FOR POWER BUTTON	025J125010	J092	/K		VOLTAGE SELECT. 2POLE-2POSITION	BY05080060
018B	GOLD	4822 410 11276	POWER BUTTON GOLD	176J270150	J099	/K		JACK MAINS ADAPTER	YJ04001240
018B	BLACK	4822 410 11275	POWER BUTTON BLACK	176J270050					
024B	GOLD	9965 000 01550	KNOB FOR MAS VOL GOLD	313J154110	▲L001	/F		MAIN TRANSFORMER	TS42002120
024B	BLACK	9965 000 01549	KNOB FOR MAS VOL BLACK	313J154010	▲L001	/K		MAIN TRANSFORMER	TS42002140
025B	GOLD	9965 000 01552	KNOB FOR INPUT SEL GOLD	313J154120	▲L001	/N /S	9965 000 01558	MAIN TRANSFORMER	TS42002130
025B	BLACK	9965 000 01551	KNOB FOR INPUT SEL BLACK	313J154020	▲L001	/N /S		MAIN TRANSFORMER	TS42002150
026B	GOLD	4822 410 12036	KNOB	289J154140	▲L002	/J	4822 526 10691	FERRITE CORE TFCK-16-8-13	FC50160030
026B	BLACK	4822 410 12035	FOR BAL/TONE/REC GOLD	289J154040	▲W001	/F		MAIN TRANSFORMER	ZC01802080
035B	F		FOR BAL/TONE/REC BLACK		▲W001	/K		MAIN TRANSFORMER	ZC01803090
036B	GOLD	9965 000 01554	NEW MARANTZ BADGE GL	313J251110	▲W001	/N	4822 321 11439	MAIN TRANSFORMER	ZC01803080
037B	/S, /J	9965 000 01553	NEW MARANTZ BADGE BL S A BADGE	313J251010	▲W001	/N		MAIN TRANSFORMER	ZC01803090
001D	GOLD	4822 442 01018	TOP LID GOLD	269J257110	▲W001	/S		MAIN TRANSFORMER	ZC01804070
001D	BLACK	4822 442 01017	TOP LID BLACK	269J257010	▲W001	/J		MAIN TRANSFORMER	ZC01803100
002D	GOLD	4822 502 14425	SCREW FOR TOP LID GOLD	323S010020					
002D	BLACK	4822 502 21693	SCREW FOR TOP LID BLACK	323S010030					
003D	GOLD	4822 426 10499	SIDE PANEL GOLD	269J249110	001T	/F /K /S		PACKING	313J851110
003D	BLACK	4822 426 10498	SIDE PANEL BLACK	269J249010	001T	/N	9965 000 01555	USER GUIDE PM-17SA	313J851350
004D	GOLD	4822 502 14425	SCREW FOR SIDE PANEL FRONT GL	323S010020	001T	/J		USER GUIDE PM-17MK2	313J851310
					T100		9965 000 01556	USER GUIDE PM-17SA REMOTE COMMANDER RC-17MK2PM	313J851250
004D	BLACK	4822 502 21693	SCREW FOR SIDE PANEL FRONT BL	323S010030					ZK313J0010
009D	GOLD	4822 502 14462	SCREW FOR TOP LID REAR GOLD	318K010020					
009D	BLACK	4822 502 14461	SCREW FOR TOP LID REAR BLACK	318K010030					
010D	GOLD	4822 502 14462	SCREW FOR SIDE PANEL REAR GL	318K010020					
010D	BLACK	4822 502 14461	SCREW FOR SIDE PANEL REAR BL	318K010030					
002G			LID BOTTOM LID	313J257020					
003G		4822 462 42134	LEG LEG	291K057010					
903G		4822 410 60343	BUTTON FOR MM MC SEL SW	058J270030					
▲C001		9965 000 01557	ELECT 15000µF 63V X2 FOR AUDIO	E115906350					
▲F001	/F		FUSE 10A 250V MITI GRU	FS11000570					
▲F001	/K, /N, /S	4822 070 35002	FUSE 5A 250V BS LISTED	FS10500850	001S	/F, /J		NOT STANDARD SPARE PARTS	313J801010
▲F001	/J		FUSE 10A 250V	FS11000530	002S			PACKING CASE PM-17SA	314J809010
▲F002	/K		FUSE T5A 250V BS	FS10500850	003S			CUSHION FOR LEFT	314J809020
								CUSHION FOR RIGHT	





## 7. DC OFFSET VOLTAGE ALIGNMENT

- Before switching the mains switch. Turn down the master volume to the minimum position and set the balance volume and tone volumes at the center positions. Set variable resistors R627(on the PCB P601:L ch) and R727(on the PCB P701:R ch) fully counterclockwise.
- Connect the digital voltage meter to the speaker terminal. And set the digital voltage meter for the DC position.
- Turn the mains switch ON. Put thin adjustment screw driver in to the hole of the HDAM (Q601:L ch / Q701:R ch) copper cover. Adjust variable resistors in the HDAM (Q601:L ch / Q701:R ch) value at 0mV±3mV with in 10 seconds after speaker relay turn ON.



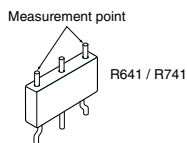
## DC オフセット電圧調整

- 本体の電源スイッチを入れるまえに、ボリュームを最小に、バランス及びトーンコントロールをセンターに合わせます。P601基板上のR627(L ch)及びP701基板上のR727(R ch)の半固定抵抗を反時計回りにしぼりきります。
- 本体背面のスピーカー端子にデジタルボルツメータを接続します。(レンジはDCに設定する。)
- HDAM(Q601:L ch/Q701:R ch)のカバーにあいた穴に調整用ドライバーをさし込み、中の半固定抵抗を回せるようにします。電源スイッチをオンにし、スピーカーリレーがオンになってから10秒以内に半固定抵抗を回しデジタルボルツメータの値が0mV±3mVになるように調整します。

## 8. IDLING CURRENT ALIGNMENT

**REMARK**  
Before "Idling current alignment", "DC offset voltage alignment" have to be done!!

- Each of cement resistor R641(on the PCB P601:Lch) and cement resistor R741(on the PCB P701:Rch) are provided with three test points. Connect the digital voltage meter, set for the DC voltage input, to the test points at the two extremities of three test points of R641(L ch) and R741(R ch).
- After the setup above, turn the mains switch ON and heat up the amplifier about 10 minutes.
- Adjust variable resistors R627(on the PCB P601:L ch) and R727(on the PCB P701:R ch) according to the digital volt meter reading. The target setting value is 9mV±1mV(45mA) for both L ch and R ch.



## アイドル電流調整

**【注意】**  
アイドル電流の調整は必ずDCオフセット電圧の調整を終えてから行って下さい。

- P601基板上のセメント抵抗R641(L ch)及びP701基板上のセメント抵抗R741(R ch)の3本の測定用端子のうち両端の2本にデジタルボルツメータを接続します。(レンジはDCに設定する。)
- 電源スイッチをオンにし、アイドル電流が安定するまで、およそ10分間放置します。
- P601基板上の半固定抵抗R627(L ch)とP701基板上の半固定抵抗R727(R ch)を時計回りにまわしデジタルボルツメータの値が9mV±1mV(45mA)になるように調整します。

## 9. ELECTRICAL PARTS LIST

### ASSIGNMENT OF COMMON PARTS CODES.

**RESISTORS**  
R\*\*\*: 1) GD05×××140, Carbon film fixed resistor, ±5% 1/4W  
R\*\*\*: 2) GD05×××160, Carbon film fixed resistor, ±5% 1/6W

① Resistance value  
0.1 Ω ... 001 10 Ω ... 100 1 kΩ ... 102 100 kΩ ... 104  
0.5 Ω ... 005 18 Ω ... 180 2.7 kΩ ... 272 680 kΩ ... 684  
1 Ω ... 010 100 Ω ... 101 10 kΩ ... 103 1 MΩ ... 105  
6.8 Ω ... 068 390 Ω ... 391 22 kΩ ... 223 4.7 MΩ ... 475

**Note:** Please distinguish 1/4W from 1/6W by the shape of parts used actually.

**CAPACITORS**  
C\*\*\*: CERAMIC CAP.  
3) DD1×××370, Ceramic capacitor  
Disc type  
Temp.coef.P350 ~N1000, 50V

② Tolerance (Capacity deviation)  
±0.25 pF ... 0  
±0.5 pF ... 1  
±5% ... 5

**\* Tolerance of COMMON PARTS hand ed here are as follows :**  
0.5 pF ~ 5 pF ... ±0.25 pF  
6 pF ~ 10 pF ... ±0.5 pF  
12 pF ~ 560 pF ... ±5%

③ Capacity value  
0.5 pF ... 005 3 pF ... 030 100 pF ... 101  
1 pF ... 010 10 pF ... 100 220 pF ... 221  
1.5 pF ... 015 47 pF ... 470 560 pF ... 561

C\*\*\*: CERAMIC CAP.  
4) DK16×××300, High dielectric constant ceramic capacitor  
Disc type  
Temp.chara. 2B4, 50V

④ Capacity value  
100 pF ... 101 1000 pF ... 102 10000 pF ... 103  
470 pF ... 471 2200 pF ... 222

C\*\*\*: 5) ELECTROLY CAP. (E), 6) FILM CAP. (F)  
5) EA×××××10, Electrolytic capacitor  
One-way lead type, Tolerance ±20%

⑤ Capacity value  
0.1 μF ... 104 4.7 μF ... 475 100 μF ... 107  
0.33 μF ... 334 10 μF ... 106 330 μF ... 337  
1 μF ... 105 22 μF ... 226 1100 μF ... 118  
2200 μF ... 228

⑥ Working voltage  
6.3V ... 006 25V ... 025  
10V ... 010 35V ... 035  
16V ... 016 50V ... 050

6) DF15×××350 → Plastic film capacitor  
DF15×××310 → One-way type, Mylar ±5% 50V  
DF16×××310 → Plastic film capacitor  
One-way type, Mylar ±10% 50V

⑦ Capacity value  
0.001 μF (1000 pF) ... 102 0.1 μF ... 104  
0.0018 μF ... 182 0.56 μF ... 564  
0.01 μF ... 103 1 μF ... 105  
0.015 μF ... 153

**NOTE:** 1) The above CODES (R\*\*\*, R\*\*\*, C\*\*\*, C\*\*\* and C\*\*\* are omitted on the schematic diagram in some case.  
2) On the occasion, be confirmed the common parts on the parts list.  
3) Refer to "Common Parts List" for the other common parts (R105, DD4, DK4).

### NOTE ON SAFETY FOR FUSIBLE RESISTOR :

The suppliers and their type numbers of fusible resistors are as follows:  
1. KOA Corporation  
Part No. (MUJ) → Type No. (KOA) Description  
NH05×××140 → RF25S×××××ΩJ (±5% 1/4W)  
NH05×××120 → RF50S×××××ΩJ (±5% 1/2W)  
NH85×××110 → RF73B2A×××××ΩJ (±5% 1/10W)  
NH95×××140 → RF73B2E×××××ΩJ (±5% 1/4W)

2. Matsushita Electronic Components Co., Ltd  
Part No. (MUJ) → Type No. (MEC) Description  
RF05×××140 → ERD-2FCJ××× (±5% 1/4W)  
RF05×××140 → ERD-2FCG××× (±2% 1/4W)  
RF02×××140 → \*Resistance value (0.1 Ω - 10 kΩ)

Examples :  
\*Resistance value  
0.1 Ω ... 001 10 Ω ... 100 1 kΩ ... 102 100 kΩ ... 104  
0.5 Ω ... 005 18 Ω ... 180 2.7 kΩ ... 272 680 kΩ ... 684  
1 Ω ... 010 100 Ω ... 101 10 kΩ ... 103 1 MΩ ... 105  
6.8 Ω ... 068 390 Ω ... 391 22 kΩ ... 223 4.7 MΩ ... 475

ABBREVIATION AND MARKS			
ANT :	ANTENNA	BATT :	BATTERY
CAP :	CAPACITOR	CER :	CERAMIC
CONN :	CONNECTING	DIG :	DIG TAL
HP :	HEADPHONE	MIC :	MICROPHONE
μPRO :	MICROPROCESSOR	REC :	RECORDING
RES :	RESISTOR	SPK :	SPEAKER
SW :	SWITCH	TRANS :	TRANSFORMER
TRIM :	TRIMMING	TRS :	TRANSISTOR
VAR :	VARIABLE	XTAL :	CRYSTAL

### NOTE ON SAFETY :

Symbol ▲ Fire or electrical shock hazard. Only original parts should be used to replaced any part marked with symbol ▲. Any other component substitution (other than original type), may increase risk of fire or electrical shock hazard.

### 安全上の注意 :

▲がついている部品は、安全上重要な部品です。必ず指定されている部品番号の部品を使用して下さい。

POS. NO	VERS. COLOR	PART NO. (FOR PCS)	DESCRIPTION	PART NO. (MJI)	POS. NO	VERS. COLOR	PART NO. (FOR PCS)	DESCRIPTION	PART NO. (MJI)
C101 }		9965 000 01569	<b>P101-SW &amp; HP CIRCUIT BOARD P101-CAPACITORS</b> CER. 0.01µF +80%-20% DC50V	DD38103010	Q201		9965 000 01584	MICROPROCESSOR 4BIT 2K TMP47C200BN-1A68(Z)	HU313JT000
C113		4822 122 40617	CER. 0.1µF +80%-20% DC50V	DD38104010	Q202		4822 209 73287	IC LB1630	HC10235030
C114		9965 000 01569	CER. 0.01µF +80%-20% DC50V	DD38103010	Q204		4822 130 60839	TRS. 2SC2458 Y OR GR	HT324582B0
C115		4822 124 41534	ELECT. 10µF M 25V RA-2	OA10602520	Q205		4822 130 60839	TRS. 2SC2458 Y OR GR	HT324582B0
C116		4822 124 12276	FILM 0.01µF ± 5%	OF15103540	Q206		4822 130 60839	TRS. 2SC2458 Y OR GR	HT324582B0
C121	/K,/S	4822 124 12276	FILM 0.01µF ± 5%	OF15103540	X201		4822 242 72527	<b>P201-MISCELLANEOUS</b> CERAMIC VIB. CERALOCK CST4.00MGW	FQ04004030
C122	/N	4822 124 12276	FILM 0.01µF ± 5%	OF15103540				<b>P261-METER &amp; LAMP CIRCUIT BOARD</b> CER. 0.1µF +8%-20% DC50V	DD38104010
R121		4822 052 10479	<b>P101-RESISTORS</b> 47Ω ±5%1/6W	GG05470160	C261		4822 122 40617	CER. 0.1µF +8%-20% DC50V	DD38104010
R122		4822 052 10479	47Ω ±5%1/6W	GG05470160	M261		4822 344 14034	D.C METER MG-28	IM11030030
<b>R***</b>			<b>P101-RESISTORS (COMMON)</b> CARBON FILM FIXED RES. ±5% 1/6W : R101-R117		M262		4822 134 40925	LAMP 8V 100mA DC IGN.BLUE	IN10080680
D101		4822 130 32362	<b>P101-SEMICONDUCTORS</b> DIODE 1SS176 MA165 1SS254 30V 0.1A	HD20002000	▲ R261		4822 052 10109	10Ω ±5%1/6W	GG05100160
Q101 }		4822 130 60588	DIG.TR.S.	BA20001000	R271		4822 050 21021	<b>P271-FUNCTION SELECTOR CIRCUIT BOARD</b> 100Ω ±5%1/4W	GG05101140
Q113		4822 209 32553	DTC114ES UN4211 10k 10k IC LC7822N	HC10309030	S271		4822 273 20368	ROTARY SW. SRRSIC	SR01120070
Q114								<b>P281-INDICATOR LED CIRCUIT BOARD</b> L.E.D. LT3D8B RED 30	HI10062320
J107	GOLD	4822 267 31692	<b>P101-MISCELLANEOUS</b> JACK HLJ0540-01-410 GRY	YJ01003880	D281		4822 130 80326	L.E.D. LT3D8B RED 30	HI10062320
J107	BLACK	9965 000 11662	JACK HLJ0540-01-410 BLK	YJ01003870	D282		4822 130 80326	L.E.D. LT3D8B RED 30	HI10062320
S101		9965 000 01579	ROTARY SW. SRBM16N-F1020	SR01060100	D283		4822 130 80326	L.E.D. LT3D8B RED 30	HI10062320
S102		9965 000 01580	PUSH SW. SPUP12-2N-“W2	SP02012290	D284		4822 130 80326	L.E.D. LT3D8B RED 30	HI10062320
			<b>P201-U-COM CIRCUIT BOARD P201-CAPACITORS</b> ELECT. 10µF M 25V RA-2	OA10602520	D285		4822 130 80326	L.E.D. LT3D8B RED 30	HI10062320
C201		4822 124 41534	ELECT. 10µF M 25V RA-2	OA10602520	D286		4822 130 80326	L.E.D. LT3D8B RED 30	HI10062320
C202		4822 122 40617	CER. 0.1µF +8%-20% DC50V	DD38104010	D287		4822 130 80326	L.E.D. LT3D8B RED 30	HI10062320
C203		4822 124 41534	ELECT. 10µF M 25V RA-2	OA10602520	▲ R281		4822 052 10681	680Ω ±5%1/6W	GG05681160
C204		4822 124 41534	ELECT. 10µF M 25V RA-2	OA10602520	C291		9965 000 00603	<b>P291-IR SENSOR CIRCUIT BOARD</b> ELECT 47µF 10V	EG47601050
C205		4822 122 40617	CER. 0.1µF +8%-20% DC50V	DD38104010	C292		4822 122 40617	CER. 0.1µF +8%-20% DC50V	DD38104010
C206		4822 124 90406	BIG ELECT FMOH223ZTP16	EX22300530	C293		9965 000 00603	ELECT 47µF 10V	EG47601050
C207		4822 122 40617	CER. 0.1µF +8%-20% DC50V	DD38104010	D291		4822 130 32362	DIODE 1SS176 MA165 1SS254 30V 0.1A	HD20002000
C208		4822 124 41534	ELECT. 10µF M 25V RA-2	OA10602520	Q291		4822 209 16735	PHOTO UNIT PNA4655M00HB	HW10006020
C209		9965 000 01569	CER. 0.01µF +80%-20% DC50V	DD38103010	Q292		4822 130 60107	TRS. 2SA1048 Y OR GR	HT110482B0
C210		9965 000 01569	CER. 0.01µF +80%-20% DC50V	DD38103010	Q293		4822 130 60839	TRS. 2SC2458 Y OR GR	HT324582B0
C211		9965 000 01569	CER. 0.01µF +80%-20% DC50V	DD38103010				<b>P301-INPUT JACK CIRCUIT BOARD P301-CAPACITORS</b> ELECT. 1µF M 50V RA-2	OA10505020
C212		4822 124 41534	ELECT. 10µF M 25V RA-2	OA10602520	C301		4822 124 41543	ELECT. 1µF M 50V RA-2	OA10505020
C217 }		9965 000 01569	CER. 0.01µF +80%-20% DC50V	DD38103010	C312			ELECT. 22µF M 25V RA-2	OA22602520
C223					C313		9965 000 01581	ELECT. 22µF M 25V RA-2	OA22602520
C224		4822 124 11947	ELECT 10µF 16V	EQ10601630	C314		9965 000 01581	ELECT. 22µF M 25V RA-2	OA22602520
R230		4822 052 10479	<b>P201-RESISTORS</b> 47Ω ±5%1/6W	GG05470160	C315		4822 124 41535	ELECT. 100µF M 25V RA-2	OA10702520
R231		4822 052 10228	2.2Ω ±5%1/6W	GG05022160	C316		4822 124 41535	ELECT. 100µF M 25V RA-2	OA10702520
<b>R***</b>			<b>P201-RESISTORS (COMMON)</b> CARBON FILM FIXED RES. ±5% 1/6W : R201-R227 R228 R229 R246-249 R291-R298		C317			CER. 0.1µF +80%-20% DC50V	DD38104010
D201			<b>P201-SEMICONDUCTORS</b>		C319		4822 122 40617	CER. 0.1µF +80%-20% DC50V	DD38104010
D203		4822 130 32362	DIODE 1SS176 MA165 1SS254 30V 0.1A	HD20002000	C320			FILM 100pF ±5%100V	OF15101540
D204					C333	/K,/N,/S	9965 000 01344	FILM 100pF ±5%100V	OF15101540
					C348	/K,/N,/S		CER. 0.01µF +80%-20% DC50V	DD38103010
					C349		9965 000 01569	CER. 0.01µF +80%-20% DC50V	DD38103010

POS. NO	VERS. COLOR	PART NO. (FOR PCS)	DESCRIPTION	PART NO. (MJI)
C350 C351 }		9965 000 01569	CER. 0.01μF +80%-20% DC50V	DD38103010
C354 C355 }		9965 000 01344	FILM 100pF ±5%100V	OF15101540
C361		9965 000 01569	CER. 0.01μF +80%-20% DC50V	DD38103010
R323 R324 R325		4822 052 10228 4822 052 10471 4822 052 10471	2.2Ω ±5%1/6W 470Ω ±5%1/6W 470Ω ±5%1/6W	GG05022160 GG05471160 GG05471160
<b>R***</b>			<b>P301-RESISTORS</b> 2.2Ω ±5%1/6W 470Ω ±5%1/6W 470Ω ±5%1/6W	
D351		4822 130 32362	<b>P301-RESISTORS (COMMON)</b> CARBON FILM FIXED RES. ±5% 1/6W : R301-R322	
Q301		4822 130 32362	<b>P301-SEMICONDUCTORS</b> DIODE 1SS176 MA165 1SS254 30V 0.1A	HD20002000
J301		4822 209 16926	IC OPA2604AP BURR-BROWN	HC10008610
J302 J303 J304 J351		4822 290 81598 4822 290 81599 4822 290 81599 4822 290 81599	TERMINAL 2P RCA JACK YKC21-3255 GOLD TERMINAL YKC21-3269 GOLD TERMINAL YKC21-3269 GOLD TERMINAL YKC21-3269 GOLD TERMINAL YKC21-3269 GOLD	YT02021130 YT02040970 YT02040970 YT02040970
L301 }		9965 000 01570	RELAY ED2-24	LY20240470
L312 L351		9965 000 01576	RELAY MR82-24USR	LY20240480
S351		9965 000 01582	SLIDE SW. SSSU12	SS02020950
C401 C402 C403 C404 C409 C410 C411 C412 C413 C414 C415 C416 C417 }		9965 000 01560 9965 000 01560 9965 000 01567 9965 000 01567 4822 124 12276 4822 124 12276 4822 121 70437 4822 121 70437 4822 124 81151 4822 124 81151 9965 000 01568 9965 000 01568	FILM 270pF ±5%100V OFC FILM 270pF ±5%100V OFC ELECT. 100μF 10V ARA ELECT. 100μF 10V ARA FILM 0.01μF ± 5% FILM 0.01μF ± 5% FILM 1000pF ±5%100V APSV FILM 1000pF ±5%100V APSV ELECT. 22μF 25V ARA ELECT. 22μF 25V ARA FILM 1500pF ±5%100V APSV FILM 1500pF ±5%100V APSV	OF55271540 OF55271540 OA10701050 OA10701050 OF15103540 OF15103540 OF15102540 OF15102540 OA22602550 OA22602550 OF15152540 OF15152540
C420 C421 C422 C423 C424		4822 124 90365 4822 122 40617 4822 122 40617 4822 122 40617 4822 124 41543	ELECT. 220μF M 25V RA-2 CER. 0.1μF DC50V +80 -20% CER. 0.1μF DC50V +80 -20% CER. 0.1μF DC50V +80 -20% ELECT. 1μF M 50V RA-2	OA22702520 DD38104010 DD38104010 DD38104010 OA10505020
<b>C***</b>			<b>P401 CAPACITORS (COMMON)</b> PLASTIC FILM CAPACITOR ±5% 50V : C504-C408	
R405 }		9965 000 01571	<b>P401-RESISTORS</b> 100Ω ± 1% 1/6W	GM11610000

POS. NO	VERS. COLOR	PART NO. (FOR PCS)	DESCRIPTION	PART NO. (MJI)
▲ R435 }		4822 052 10101	100Ω ±5%1/6W	GG05101160
▲ R438 R439		4822 052 10109	10Ω ±5%1/6W	GG05100160
<b>R***</b>			<b>P401-RESISTORS (COMMON)</b> CARBON FILM FIXED RES. ±5% 1/6W : R401-R404 R409-R434 R471 R472	
D401 }		4822 130 32362	<b>P401-SEMICONDUCTORS</b> DIODE 1SS176 MA165 1SS254 30V 0.1A	HD20002000
D410		4822 130 32362	DIODE 1SS176 MA165 1SS254 30V 0.1A	HD20002000
Q401 }		4822 130 43547	F.E.T. 2SK369 V VGDS-40V PD0.4W	HF203691V0
Q404 Q405 }		4822 130 42949	TRS. 2SA970 GR OR BL	HT109702A0
Q408 Q409 }		4822 130 43233	TRS. 2SC2240 GR OR BL	HT322402A0
Q412 Q413		4822 209 81565	IC NJM-2041-DD	HC10026090
L401		9965 000 01570	<b>P401-MISCELLANEOU</b> RELAY ED2-24	LY20240470
C471 C472 C473 C474		4822 121 70437 4822 121 70437 9965 000 01569 9965 000 01569	FILM 1000pF ±5%100V APSV FILM 1000pF ±5%100V APSV CER. 0.01μF +80%-20% DC50V CER. 0.01μF +80%-20% DC50V	OF15102540 OF15102540 DD38103010 DD38103010
J471		4822 290 81638	<b>P471-MISCELLANEOUS</b> TERMINAL 14X14 RA 1L1P BLK AU FLM-GND	YT02010790
J472		4822 290 81638	TERMINAL 14X14 RA 1L1P BLK AU FLM-GND	YT02010790
S471 U473 U474	/K,/N,/S /K,/N,/S	4822 276 13409 4822 158 60606 4822 158 60606	PUSH SW. SPUP19-4N-W2.0 CHOKE COIL 22μH 5R200PN CHOKE COIL 22μH 5R200PN	SP04010660 LC12030050 LC12030050
C501 C502 C503 C504 C505 C506 C507 C508 C508 C511 C512 C513 C514 C515 C516	/F,/U /K,/N,/S /F,/U /K,/N,/S	9965 000 01560 9965 000 01560 9965 000 01585 9965 000 01585 9965 000 01586 9965 000 01586 9965 000 02015 9965 000 02015 9965 000 02015 4822 124 90051 4822 124 90051 9965 000 01569 9965 000 01569 9965 000 01569 4822 124 41543	FILM 270pF ±5%100V OFC FILM 270pF ±5%100V OFC MICA 5pF 500V FE922H MICA 5pF 500V FE922H MICA 22pF ±5%500V FE MICA 22pF ±5%500V FE ELECT. 22μF 25V ARA ELECT. 22μF 25V ARS ELECT. 22μF 25V ARA ELECT. 22μF 25V ARS ELECT. 220μF M 25V ARA ELECT. 220μF M 25V ARA CER. 0.01μF +80%-20% DC50V CER. 0.01μF +80%-20% DC50V CER. 0.01μF +80%-20% DC50V ELECT. 1μF M 50V RA-2	OF55271540 OF55271540 DF31050520 DF31050520 DF35220520 DF35220520 OA22602550 OA22602540 OA22602550 OA22602540 OA22702550 OA22702550 DD38103010 DD38103010 DD38103010 OA10505020
R505 R506		9965 000 01565 9965 000 01565	<b>P501-MASTER VOL. &amp; AMP</b> <b>CIRCUIT BOARD</b> <b>P501-CAPACITORS</b> FILM 270pF ±5%100V OFC FILM 270pF ±5%100V OFC MICA 5pF 500V FE922H MICA 5pF 500V FE922H MICA 22pF ±5%500V FE MICA 22pF ±5%500V FE ELECT. 22μF 25V ARA ELECT. 22μF 25V ARS ELECT. 22μF 25V ARA ELECT. 22μF 25V ARS ELECT. 220μF M 25V ARA ELECT. 220μF M 25V ARA CER. 0.01μF +80%-20% DC50V CER. 0.01μF +80%-20% DC50V CER. 0.01μF +80%-20% DC50V ELECT. 1μF M 50V RA-2	NR01680140 NR01680140

POS. NO	VERS. COLOR	PART NO. (FOR PCS)	DESCRIPTION	PART NO. (MJI)	POS. NO	VERS. COLOR	PART NO. (FOR PCS)	DESCRIPTION	PART NO. (MJI)
R507 }		4822 111 20413	220Ω ± 1% 1/4W ERD	NR01221140	R579		4822 100 30138	VAR. 100kΩ MN FOR BALANCE VOLUME	RM01041310
R510					R***			<b>P551-RESISTORS (COMMON)</b> CARBON FILM FIXED RES. ±5% 1/6W : R551-R562 R565-R574	
R537		4822 052 10479	47Ω ±5%1/6W	GG05470160					
R538		4822 052 10479	47Ω ±5%1/6W	GG05470160					
R539		9965 000 01587	VAR. RK18112MC-30K DX2	RM03030050					
R540		4822 052 10228	2.2Ω ±5%1/6W	GG05022160					
R***			<b>P501-RESISTORS (COMMON)</b> CARBON FILM FIXED RES. ±5% 1/6W : R501-R505 R511-R536		D551		4822 130 32362	<b>P551-SEMICONDUCTORS</b> DIODE 1SS176 MA165 1SS254 30V 0.1A	HD20002000
D501 }		4822 130 32362	DIODE 1SS176 MA165 1SS254 30V 0.1A	HD20002000	Q551 }		4822 209 81565	IC NJM-2041-DD	HC10026090
D506					Q554				
Q501			IC NEW HDAM	KH313J1010	L551		9965 000 01576	RELAY MR82-24USR	LY20240480
Q502			IC NEW HDAM	KH313J1010	S551		4822 276 13065	PUSH SW. SPUP24V1A STROK=2MM NON-SHORT	SP04010650
Q503 }		4822 130 62649	F. E. T. 2SJ74 BL VGDS=25V PD=24W	HF100741G0				<b>P601-POWER AMP L CIRCUIT BOARD</b>	
Q506					C601		9965 000 01560		FILM 270pF ±5%100V OFC
Q507		4822 130 42949	TRS. 2SA970 GR OR BL	HT109702A0	C602		4822 121 10867	FILM 0.1μF ±5%100V OFC	OF55104540
Q508		4822 130 42949	TRS. 2SA970 GR OR BL	HT109702A0	C603		4822 124 90365	ELECT. 220μF M 25V RA-2	OA22702520
Q509		4822 130 43233	TRS. 2SC2240 GR OR BL	HT322402A0	C604		4822 124 90365	ELECT. 220μF M 25V RA-2	OA22702520
Q510		4822 130 43233	TRS. 2SC2240 GR OR BL	HT322402A0	C605		9965 000 01561	MICA 10pF ± 0.5pF 500V FE	DF31100520
Q511		4822 130 42949	TRS. 2SA970 GR OR BL	HT109702A0	C607	/F,/U		ELECT. 10μF M 100V RA-2	OA10610020
Q512		4822 130 42949	TRS. 2SA970 GR OR BL	HT109702A0	C607	/K,/N,/S	9965 000 02015	ELECT. 22μF M 25V ARS	OA22602540
Q513		4822 130 43233	TRS. 2SC2240 GR OR BL	HT322402A0	C608		4822 124 12276	FILM 0.01μF ± 5%	OF15103540
Q514		4822 130 43233	TRS. 2SC2240 GR OR BL	HT322402A0	C610		4822 124 22273	ELECT. 0.47μF M 50V RA-2	OA47405020
Q515		4822 130 43283	TRS. 2SC2705 O OR Y	HT327052A0	C611		9965 000 01562	ELECT 10μF M 50V RA2BP	EQ10605090
Q516		4822 130 43283	TRS. 2SC2705 O OR Y	HT327052A0	C612		9965 000 01562	ELECT 10μF M 50V RA2BP	EQ10605090
Q517		4822 130 42999	TRS. 2SA1145 O OR Y	HT111452A0	C613	/F,/U		ELECT. 330μF M 50V RA-2	OA33705020
Q518		4822 130 42999	TRS. 2SA1145 O OR Y	HT111452A0	C613	/K,/N,/S	9965 000 02014	ELECT. 220μF M 50V ARS	OA22705040
L501		9965 000 01570	RELAY ED2-24	LY20240470	C614	/F,/U		ELECT. 330μF M 50V RA-2	OA33705020
L502		9965 000 01570	RELAY ED2-24	LY20240470	C614	/K,/N,/S	9965 000 02014	ELECT. 220μF M 50V ARS	OA22705040
			<b>P501-MISCELLANEOUS</b>		C615		9965 000 01564	FILM 680pF ±5%100V OFC	OF55681540
			<b>P551-TONE AMP CIRCUIT BOARD</b>		R605		4822 111 20413	220Ω ± 1% 1/4W ERD	NR01221140
			<b>P551-CAPACITORS</b>		▲ R607		4822 052 10102	1kΩ ±5%1/6W	GG05102160
C551		5322 124 21731	ELECT. 10μF M 50V RA-2	OA10605020	▲ R608		4822 052 10102	1kΩ ±5%1/6W	GG05102160
C552		5322 124 21731	ELECT. 10μF M 50V RA-2	OA10605020	▲ R609		4822 111 31001	330Ω ±5%1/6W	GG05331160
C553		9965 000 01560	FILM 270pF ±5%100V OFC	OF55271540	▲ R610		4822 111 31001	330Ω ±5%1/6W	GG05331160
C554		9965 000 01560	FILM 270pF ±5%100V OFC	OF55271540	R613		9965 000 01565	68Ω ± 1% 1/4W ERD	NR01680140
C555		9965 000 01344	FILM 100pF ±5%100V	OF15101540	R614		4822 111 20413	220Ω ± 1% 1/4W ERD	NR01221140
C556		9965 000 01344	FILM 100pF ±5%100V	OF15101540	R615		4822 111 20413	220Ω ± 1% 1/4W ERD	NR01221140
C557		5322 124 21731	ELECT. 10μF M 50V RA-2	OA10605020	R616		4822 111 20413	220Ω ± 1% 1/4W ERD	NR01221140
C558		5322 124 21731	ELECT. 10μF M 50V RA-2	OA10605020	R617		4822 050 23308	3.3MΩ ±5%1/6W	GD05335160
C559		4822 124 80067	ELECT. 4.7μF M 50V RA-2	OA47505020	R618		4822 050 23308	3.3MΩ ±5%1/6W	GD05335160
C560		4822 124 80067	ELECT. 4.7μF M 50V RA-2	OA47505020	R619		4822 050 23308	3.3MΩ ±5%1/6W	GD05335160
C561		9965 000 01583	FILM 0.047μF ±5%50V MTFV	OF15473040	R621				
C562		9965 000 01583	FILM 0.047μF ±5%50V MTFV	OF15473040	}		4822 053 10681	680Ω ±5%1W	GA05681010
C563		4822 124 12276	FILM 0.01μF ± 5%	OF15103540	R624				
C564		4822 124 12276	FILM 0.01μF ± 5%	OF15103540	R627		9965 000 01566	TRIM. VARIABLE 2.2kΩ	RA02220760
C565		9965 000 01344	FILM 100pF ±5%100V	OF15101540	R628		4822 052 10109	10Ω ±5%1/6W	GG05100160
C566		9965 000 01344	FILM 100pF ±5%100V	OF15101540	R629		4822 052 10101	100Ω ±5%1/6W	GG05101160
C567 }		4822 124 90365	ELECT. 220μF M 25V RA-2	OA22702520	R630		4822 052 10101	100Ω ±5%1/6W	GG05101160
C570					▲ R631		4822 050 22209	22Ω ±5%1/4W	GG05220140
			<b>P551-RESISTORS</b>		▲ R632		4822 050 22209	22Ω ±5%1/4W	GG05220140
▲ R563 }		4822 052 10101	100Ω ±5%1/6W	GG05101160	R633		4822 052 10471	470Ω ±5%1/6W	GG05471160
▲ R576					R634		4822 052 10471	470Ω ±5%1/6W	GG05471160
R577		4822 101 30735	VAR. 10kΩ X2 B	RM01030720	R635		4822 050 26809	68Ω ±5%1/6W	GG05680160
R578		4822 101 30735	VAR. 10kΩ X2 B	RM01030720	R636		4822 050 26809	68Ω ±5%1/6W	GG05680160
					▲ R637		4822 052 10151	150Ω ±5%1/6W	GG05151160
					R638			JUMPER JUMPER WIRE 5MM	75060501P0
					R639		4822 052 10109	10Ω ±5%1/6W	GG05100160

POS. NO	VERS. COLOR	PART NO. (FOR PCS)	DESCRIPTION	PART NO. (MJI)
R640		4822 052 10109	10Ω ±5%1/6W	GG05100160
▲ R641		4822 111 91402	FIXED 0.10Ω x 2 3W	BZ10102010
R642		4822 052 10102	1kΩ ±5%1/6W	GG05102160
R643		4822 052 10102	1kΩ ±5%1/6W	GG05102160
<b>R***</b>			<b>P601-RESISTORS (COMMON)</b> CARBON FILM FIXED RES. ±5% 1/6W : R601-R604 R611 R612 R620 R625 R626 R644-R647	
D601		4822 130 83385	ZENER DIODE HZ20L-1	HD30020010
D602		4822 130 83385	ZENER DIODE HZ20L-1	HD30020010
D603		4822 130 32362	DIODE 1SS176 MA165 1SS254 30V 0.1A	HD20002000
D604		4822 130 80837	DIODE HSS81TD 150V 150mA	HD20027010
D605		4822 130 32362	DIODE 1SS176 MA165 1SS254 30V 0.1A	HD20002000
∫				
D612		4822 130 33948	ZENER DIODE 5.6V	HD30561000
D613		4822 130 33948	ZENER DIODE 5.6V	HD30561000
D614		4822 130 80837	DIODE HSS81TD 150V 150mA	HD20027010
D615		4822 130 80837	DIODE HSS81TD 150V 150mA	HD20027010
D616		4822 130 80837	DIODE HSS81TD 150V 150mA	HD20027010
D617		4822 130 80837	DIODE HSS81TD 150V 150mA	HD20027010
K601			TRS. KIT 2SA1837 & 2SC4793 HFE SELECTED RANK	HK183719C0
Q601			IC NEW HDAM	KH313J1010
Q602		4822 130 60526	TRS. 2SD1508 DARLINGTON TR.HFE>4000	HT415080A0
Q603		4822 130 42949	TRS. 2SA970 GR OR BL	HT109702A0
Q604		4822 130 43233	TRS. 2SC2240 GR OR BL	HT322402A0
Q605		4822 130 42949	TRS. 2SA970 GR OR BL	HT109702A0
Q606		4822 130 43233	TRS. 2SC2240 GR OR BL	HT322402A0
Q607		4822 130 43283	TRS. 2SC2705 O OR Y	HT327052A0
Q608		4822 130 42999	TRS. 2SA1145 O OR Y	HT111452A0
Q609		4822 130 42999	TRS. 2SA1145 O OR Y	HT111452A0
Q610		4822 130 43283	TRS. 2SC2705 O OR Y	HT327052A0
Q611		4822 130 43283	TRS. 2SC2705 O OR Y	HT327052A0
Q612		4822 130 42999	TRS. 2SA1145 O OR Y	HT111452A0
▲ Q613		4822 130 63635	TRS. 2SC4793 O Y	HT347932A0
▲ Q614		4822 130 63634	TRS. 2SA1837 O Y	HT118372A0
▲ Q615		4822 130 60741	TRS. 2SC3284 O P Y 125W FMG112	HT332843D0
▲ Q616		4822 130 63674	TRS. 2SA1303 O P Y 125W FMG112	HT113033D0
Q617		4822 130 43233	TRS. 2SC2240 GR OR BL	HT322402A0
Q618		4822 130 42949	TRS. 2SA970 GR OR BL	HT109702A0
			<b>P701-POWER AMP R CIRCUIT BOARD</b>	
			<b>P701-CAPACITORS</b>	
C701		9965 000 01560	FILM 270pF ±5%100V OFC	OF55271540
C702		4822 121 10867	FILM 0.1μF ±5%100V OFC	OF55104540
C703		4822 124 90365	ELECT. 220μF M 25V RA-2	OA22702520
C704		4822 124 90365	ELECT. 220μF M 25V RA-2	OA22702520
C705		9965 000 01561	MICA 10pF ± 0.5pF 500V FE	DF31100520
C707	/F,/U		ELECT. 10μF M 100V RA-2	OA10610020
C707	/K,/N,/S	9965 000 02015	ELECT. 22μF M 25V ARS	OA22602540
C708		4822 124 12276	FILM 0.01μF ± 5%	OF15103540
C710		4822 124 22273	ELECT. 0.47μF M 50V RA-2	OA47405020
C711		9965 000 01562	ELECT 10μF M 50V RA2BP	EQ10605090
C712		9965 000 01562	ELECT 10μF M 50V RA2BP	EQ10605090
C713	/F,/U		ELECT. 330μF M 50V RA-2	OA33705020
C713	/K,/N,/S	9965 000 02014	ELECT. 220μF M 50V ARS	OA22705040
C714	/F,/U		ELECT. 330μF M 50V RA-2	OA33705020
C714	/K,/N,/S	9965 000 02014	ELECT. 220μF M 50V ARS	OA22705040
C715		9965 000 01564	FILM 680pF ±5%100V OFC	OF55681540

POS. NO	VERS. COLOR	PART NO. (FOR PCS)	DESCRIPTION	PART NO. (MJI)
R705		4822 111 20413	220Ω ± 1% 1/4W ERD	NR01221140
▲ R707		4822 052 10102	1kΩ ±5%1/6W	GG05102160
▲ R708		4822 052 10102	1kΩ ±5%1/6W	GG05102160
▲ R709		4822 111 31001	330Ω ±5%1/6W	GG05331160
▲ R710		4822 111 31001	330Ω ±5%1/6W	GG05331160
R713		9965 000 01565	68Ω ± 1% 1/4W ERD	NR01680140
R714		4822 111 20413	220Ω ± 1% 1/4W ERD	NR01221140
R715		4822 111 20413	220Ω ± 1% 1/4W ERD	NR01221140
R716		4822 111 20413	220Ω ± 1% 1/4W ERD	NR01221140
R717		4822 050 23308	3.3MΩ ±5%1/6W	GD05335160
R718		4822 050 23308	3.3MΩ ±5%1/6W	GD05335160
R719		4822 050 23308	3.3MΩ ±5%1/6W	GD05335160
R721		4822 053 10681	680Ω ±5%1W	GA05681010
∫				
R724				
R727		9965 000 01566	TRIM. VARIABLE 2.2kΩ	RA02220760
R728		4822 052 10109	10Ω ±5%1/6W	GG05100160
R729		4822 052 10101	100Ω ±5%1/6W	GG05101160
R730		4822 052 10101	100Ω ±5%1/6W	GG05101160
▲ R731		4822 050 22209	22Ω ±5%1/4W	GG05220140
▲ R732		4822 050 22209	22Ω ±5%1/4W	GG05220140
R733		4822 052 10471	470Ω ±5%1/6W	GG05471160
R734		4822 052 10471	470Ω ±5%1/6W	GG05471160
R735		4822 050 26809	68Ω ±5%1/6W	GG05680160
R736		4822 050 26809	68Ω ±5%1/6W	GG05680160
▲ R737		4822 052 10151	150Ω ±5%1/6W JUMPER WIRE 5MM	GG05151160 75060501P0
R738				
R739		4822 052 10109	10Ω ±5%1/6W	GG05100160
R740		4822 052 10109	10Ω ±5%1/6W	GG05100160
▲ R741		4822 111 91402	0.10OHMX2 3W	BZ10102010
R742		4822 052 10102	1kΩ ±5%1/6W	GG05102160
R743		4822 052 10102	1kΩ ±5%1/6W	GG05102160
<b>R***</b>			<b>P701-RESISTORS (COMMON)</b> CARBON FILM FIXED RES. ±5% 1/6W : R701-R704 R711 R712 R720 R725 R726 R744-R747	
			<b>P701-SEMICONDUCTORS</b>	
D701		4822 130 83385	ZENER DIODE HZ20L-1	HD30020010
D702		4822 130 83385	ZENER DIODE HZ20L-1	HD30020010
D703		4822 130 32362	DIODE 1SS176 MA165 1SS254 30V 0.1A	HD20002000
D704		4822 130 80837	DIODE HSS81TD 150V 150MA	HD20027010
D705		4822 130 32362	DIODE 1SS176 MA165 1SS254 30V 0.1A	HD20002000
∫				
D712		4822 130 33948	ZENER DIODE 5.6V	HD30561000
D713		4822 130 33948	ZENER DIODE 5.6V	HD30561000
D714		4822 130 80837	DIODE HSS81TD 150V 150mA	HD20027010
D715		4822 130 80837	DIODE HSS81TD 150V 150mA	HD20027010
D716		4822 130 80837	DIODE HSS81TD 150V 150mA	HD20027010
D717		4822 130 80837	DIODE HSS81TD 150V 150mA	HD20027010
K701			TRS. KIT 2SA1837 & 2SC4793 HFE SELECTED RANK	HK183719C0
Q701			IC NEW HDAM	KH313J1010
Q702		4822 130 60526	TRS. 2SD1508 DARLINGTON TR.HFE>4000	HT415080A0
Q703		4822 130 42949	TRS. 2SA970 GR OR BL	HT109702A0
Q704		4822 130 43233	TRS. 2SC2240 GR OR BL	HT322402A0
Q705		4822 130 42949	TRS. 2SA970 GR OR BL	HT109702A0
Q706		4822 130 43233	TRS. 2SC2240 GR OR BL	HT322402A0
Q707		4822 130 43283	TRS. 2SC2705 O OR Y	HT327052A0
Q708		4822 130 42999	TRS. 2SA1145 O OR Y	HT111452A0
Q709		4822 130 42999	TRS. 2SA1145 O OR Y	HT111452A0
Q710		4822 130 43283	TRS. 2SC2705 O OR Y	HT327052A0
Q711		4822 130 43283	TRS. 2SC2705 O OR Y	HT327052A0
Q712		4822 130 42999	TRS. 2SA1145 O OR Y	HT111452A0

POS. NO	VERS. COLOR	PART NO. (FOR PCS)	DESCRIPTION	PART NO. (MJI)	POS. NO	VERS. COLOR	PART NO. (FOR PCS)	DESCRIPTION	PART NO. (MJI)	
▲ Q713		4822 130 63635	TRS. 2SC4793 O Y	HT347932A0				<b>P801-SEMICONDUCTORS</b>		
▲ Q714		4822 130 63634	TRS. 2SA1837 O Y	HT118372A0	▲ D801		4822 130 80839		DIODE S5688G	HD20029050
▲ Q715		4822 130 60741	TRS. 2SC3284 O P Y	HT332843D0	▲ D808				VRM=400V IO=1A	
			125W FMG112		D809		4822 130 10851		ZENER DIODE HZ24-2L	HD30012010
Q716		4822 130 63674	TRS. 2SA1303 O P Y	HT113033D0	D810		4822 130 10851		ZENER DIODE HZ24-2L	HD30012010
			125W FMG112							
Q717		4822 130 43233	TRS. 2SC2240 GR OR BL	HT322402A0	D811		4822 130 80839		DIODE S5688G	HD20029050
Q718		4822 130 42949	TRS. 2SA970 GR OR BL	HT109702A0					VRM=400V IO=1A	
					D812		4822 130 80839		DIODE S5688G	HD20029050
			<b>P801-POWER SUPPLY &amp; PROTECTOR CIRCUIT BOARD</b>						VRM=400V IO=1A	
			<b>P801-CAPACITORS</b>		▲ D813		4822 130 80839		DIODE S5688G	HD20029050
C801		9965 000 01577	ELECT 1800µF 50V FOR AUDIO	EB18805020	▲ D814		4822 130 80839		DIODE S5688G	HD20029050
C802		9965 000 01577	ELECT 1800µF 50V FOR AUDIO	EB18805020					VRM=400V IO=1A	
C805		4822 124 90355	ELECT. 100µF M 50V RA-2	OA10705020	D815		4822 130 80116		ZENER DIODE 24V EQUIVALENT	HD32401000
C806		4822 124 90355	ELECT. 100µF M 50V RA-2	OA10705020	▲ D816		4822 130 80839		DIODE S5688G	HD20029050
C807		4822 124 90366	ELECT. 220µF M 50V RA-2	OA22705020					VRM=400V IO=1A	
C808		4822 124 90366	ELECT. 220µF M 50V RA-2	OA22705020	▲ D817		4822 130 80839		DIODE S5688G	HD20029050
C809		4822 124 41542	ELECT. 470µF M 50V RA-2	OA47705020					VRM=400V IO=1A	
C810		4822 124 41535	ELECT. 100µF M 25V RA-2	OA10702520	D818		4822 130 80839		DIODE S5688G	HD20029050
C811		4822 124 90366	ELECT. 220µF M 50V RA-2	OA22705020					VRM=400V IO=1A	
C812		4822 124 90355	ELECT. 100µF M 50V RA-2	OA10705020	▲ D819		4822 130 80839		DIODE S5688G	HD20029050
C813		4822 124 41534	ELECT. 10µF M 25V RA-2	OA10602520					VRM=400V IO=1A	
C814		4822 124 41543	ELECT. 1µF M 50V RA-2	OA10505020	▲ D820		4822 130 80839		DIODE S5688G	HD20029050
C815		4822 124 41543	ELECT. 1µF M 50V RA-2	OA10505020					VRM=400V IO=1A	
C816		4822 124 12276	FILM 0.01µF ± 5%	OF15103540	D901		4822 130 80837	DIODE HSS81TD 150V 150mA	HD20027010	
C901		4822 124 12276	FILM 0.01µF ± 5%	OF15103540	D902		4822 130 80837	DIODE HSS81TD 150V 150mA	HD20027010	
C902		4822 124 22698	ELECT. 47µF M 25V RA-2	OA47602520	D951		4822 130 32362	DIODE 1SS176 MA165 1SS254 30V 0.1A	HD20002000	
C903		4822 122 40617	CER. 0.1µF +8%-20% DC50V	DD38104010						
C904		5322 124 21731	ELECT. 10µF M 50V RA-2	OA10605020	D952		4822 130 33948	ZENER DIODE 5.6V EQUIVALENT	HD30561000	
C905		4822 124 22698	ELECT. 47µF M 25V RA-2	OA47602520						
C906		4822 124 22273	ELECT. 0.47µF M 50V RA-2	OA47405020						
C907		9965 000 01575	FILM 0.039µF ±5%100V OFC	OF55393540	▲ Q801		4822 130 11605	TRS. 2SD1415	HT41415100	
C908		9965 000 01575	FILM 0.039µF ±5%100V OFC	OF55393540	▲ Q802		4822 130 11604	TRS. 2SB1020	HT21020100	
C909	/K,/N,/S	4822 124 12276	FILM 0.01µF ± 5%	OF15103540	Q803		4822 130 42836	F.E.T. 2SK246 GR	HF202461C0	
C910	/K,/N,/S	4822 124 12276	FILM 0.01µF ± 5%	OF15103540	Q804		4822 130 42836	F.E.T. 2SK246 GR	HF202461C0	
C951		4822 122 40617	CER. 0.1µF +8%-20% DC50V	DD38104010	▲ Q805		4822 130 11605	TRS. 2SD1415	HT41415100	
C952		4822 124 41543	ELECT. 1µF M 50V	OA10505020	Q806		4822 130 42836	F.E.T. 2SK246 GR	HF202461C0	
C953		4822 124 41535	ELECT. 100µF M 25V RA-2	OA10702520	▲ Q807		4822 209 83821	IC NJM78M06FA	HC38506090	
					Q901		4822 209 83312	IC TA7317P	HC10042050	
					Q951		4822 130 42836	F.E.T. 2SK246 GR	HF202461C0	
▲ R801		4822 050 21108	1Ω ±5%1/2W	GG05010120	Q952		4822 130 43233	TRS. 2SC2240 GR OR BL	HT322402A0	
▲ R802		4822 050 21108	1Ω ±5%1/2W	GG05010120	Q953		4822 130 43233	TRS. 2SC2240 GR OR BL	HT322402A0	
▲ R803		4822 052 10101	100Ω ±5%1/6W	GG05101160	Q954		4822 130 60117	TRS. 2SC3419 Y 40V 0.8A PC=1.2W 5W	HT334191Y0	
▲ R804		4822 052 10101	100Ω ±5%1/6W	GG05101160						
▲ R807		4822 050 24708	4.7Ω ±5%1/4W	GG05047140	Q955		4822 209 83679	IC NJM2904 DUAL OP-AMP	HC10030090	
▲ R808		4822 050 24708	4.7Ω ±5%1/4W	GG05047140						
▲ R809		4822 117 10158	1Ω ±5%1/4W	GG05010140						
▲ R810		4822 052 10101	100Ω ±5%1/6W	GG05101160	▲ G801		4822 121 20263	<b>P801-MISCELLANEOUS</b> CAP.COMP. 0.47µF + 6.8Ω	BF47400010	
▲ R812		4822 050 24708	4.7Ω ±5%1/4W	GG05047140				NOISE KILLER		
▲ R813		4822 113 90119	FUSE 22Ω G 1/4W	NF02220140	J908		4822 267 41009	TERMINAL 2P RCA PIN JACK	YT02020890	
▲ R814		4822 113 90119	FUSE 22Ω G 1/4W	NF02220140	L801		4822 158 60605	FERRIT BEADS B-01-RT	FC90050060	
▲ R816		4822 052 10478	4.7Ω ±5%1/6W	GG05047160	L901		4822 280 70354	RELAY VB 24MBU-510 5A/240VAC	LY20240310	
▲ R818		4822 053 10339	33Ω ±5%1W	GA05330010						
▲ R819		4822 053 10339	33Ω ±5%1W	GA05330010	L902		9965 000 01576	RELAY MR82-24USR	LY20240480	
R913		4822 053 10109	10Ω ±5%1W	GA05100010	L905		4822 158 60605	FERRIT BEADS B-01-RT	FC90050060	
R914		4822 053 10109	10Ω ±5%1W	GA05100010	U804		4822 158 60605	FERRITE BEADS B-01-RT	FC90050060	
R917		4822 053 10331	330Ω ±5%1W	GA05331010						
R918		4822 053 10331	330Ω ±5%1W	GA05331010						
R951		4822 052 10109	10Ω ±5%1/6W	GG05100160						
			<b>P801-RESISTORS (COMMON)</b>		▲ D861		9965 000 01578	DIODE D25XB60	HE20029290	
			CARBON FILM FIXED RES.		▲ G861		4822 121 20263	600V 25A BRIDGE-DI CAP.COMP. 0.47µF + 6.8Ω	BF47400010	
			±5% 1/6W : R805 R806 R811 R815 R817 R901-R912 R923 R952-R959					NOISE KILLER		

POS. NO	VERS. COLOR	PART NO. (FOR PCS)	DESCRIPTION	PART NO. (MJI)
▲ J871	/F,/U	482226731417	<b>P871-AC-OUTLET CIRCUIT BOARD [F,/U VERSION]</b> JACK AC OUTLET CCT1306-0212	YJ04001840
▲ C891 S891		4822 121 43732 4822 276 12647	<b>P891-POWER SW CIRCUIT BOARD</b> FILM 0.1μF M 250V AC PUSH SW. POWER ESB-99753V-4 TV-8	DF77103500 SP01011470
RM09		4822 100 20681	<b>PM01-HDAM CIRCUIT BOARD FOR Q501 Q502 Q601 Q701</b> <b>PM01-RESISTOR</b> TRIM. 2.2kΩ RH0638C14R	RA02220780
<b>R***</b>			<b>PM01-RESISTORS (COMMON)</b> CARBON FILM FIXED RES. ±5% 1/6W : RM01-RM08	
DM01 ∫ DM05		4822 130 32362	<b>PM01-SEMICONDUCTORS</b> DIODE 1SS176 A165 1SS254 30V 0.1A	HD20002000
QM01		5322 130 41844	F.E.T. 2SK170 BL VGDS=-40V PD=0.4V	HF201701G0
QM02		5322 130 41844	F.E.T. 2SK170 BL VGDS=-40V PD=0.4V	HF201701G0
QM03		4822 130 43233	TRS. 2SC2240 GR OR BL	HT322402A0
QM04		4822 130 42949	TRS. 2SA970 GR OR BL	HT109702A0
QM05		4822 130 42949	TRS. 2SA970 GR OR BL	HT109702A0
QM06		4822 130 43233	TRS. 2SC2240 GR OR BL	HT322402A0